

The logo consists of a stylized graphic of three vertical bars of increasing height, with small squares at the top of each bar, positioned to the left of the text.

# PUBLIC UNIVERSITY MEDICAID PARTNERSHIPS

LEVERAGING RESOURCES TO TRANSFORM HEALTHCARE PROGRAMS

## Beyond Research: What Services Can Universities Provide to State Agencies?

*Quality Improvement Science*

**Dushka Crane, PhD**

**Director of Healthcare Integration**

Ohio Colleges of Medicine Government Resource Center



**THE OHIO STATE UNIVERSITY**  
COLLEGE OF MEDICINE

# Technical Assistance to Address High Priority Safety and Cost Drivers

## Behavioral Health



Improve safe and effective psychotropic medication and behavioral health treatments for children

- ✓ Reduce antipsychotic polypharmacy
- ✓ Reduce all psychotropic polypharmacy
- ✓ Reduce AP prescribing < 6 years

Establish a maternal care home model to reduce the impact of neonatal abstinence syndrome

- ✓ Improve treatment retention
- ✓ Reduce LBW
- ✓ Reduce NICU LOS

# Technical Assistance to Improve Services to High Priority Populations

## Maternal and Infant Health



Ohio Gestational Diabetes  
Postpartum Care Learning Collaborative

Check her risk. Protect her health.



To increase knowledge of and improve health outcomes for women with history of GDM

- ✓ Increase the postpartum visit rate
- ✓ Increase the number of postpartum T2DM screenings among women with history of GDM

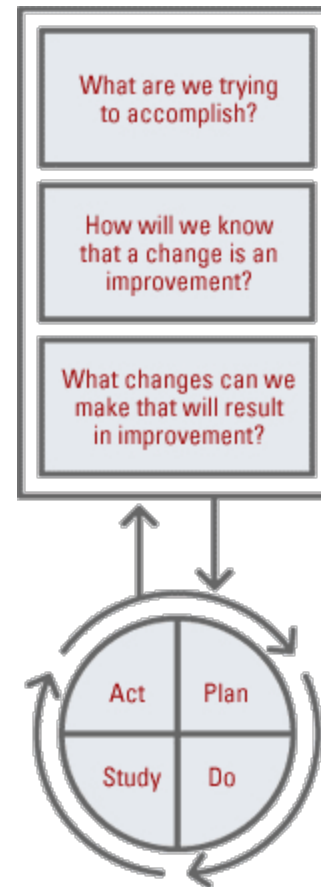
Improve women's health and birth outcomes by reducing the prevalence of smoking before, during and after pregnancy

- ✓ Increase effective utilization of the 5A's brief counseling intervention

# Healthcare Quality Improvement

## The Institute for Healthcare Improvement (IHI) Rapid Cycle Quality Improvement Model.

- Accelerate implementation of best practices
- Engage state, health systems, and stakeholders in learning and collaboration
- Statewide rollout of community-tested strategies



# Role of Government Resource Center

- Identify Academic Experts from Ohio Colleges
- Implement the technical aspects of the QI model
- Provide data for performance measurement
- Coach providers to use QI strategies
- Provide policy recommendations for sustainability

# Data for Performance Measurement

Please use link here to identify top reasons

[Please Click Here to Identify Reasons for Prescribing Pattern](#)

First Name	Last Name	Participant ID	Age in years	Prescribing Pattern Start Date	Physician Name	NPI	≥ 4 Psychotropics	AP use 2-5 Years of Age	≥ 2 APs	Claim Type	Foster
Cindy	*****	***1***	8	6/30/2014	*****	*****	YES	NO	YES	FFS	YES
Robert	*****	***2***	9	9/9/2013	*****	*****	YES	NO	YES	FFS	YES
Bruce	*****	***3***	12	3/11/2014	*****	*****	YES	NO	NO	MC	No
Dan	*****	***4***	12	9/5/2013	*****	*****	YES	NO	YES	FFS	YES
Erica	*****	***5***	13	9/11/2013	*****	*****	YES	NO	YES	FFS	YES
Tim	*****	***6***	13		*****	*****	YES	NO	YES	FFS	NO
Rachel	*****	***7***	14		*****	*****	YES	NO	NO	MC	NO

# Performance Measure Data Portal

[Welcome](#) | [Log On](#) [Log Off](#)

[About the Project](#) | [About QI Science](#) | [Enter Data](#) | [View Data Reports](#) | [Download Data](#) | [Contact Us](#)

## Welcome to the Maternal Opiate Medical Support (MOMS) Quality Improvement Initiative

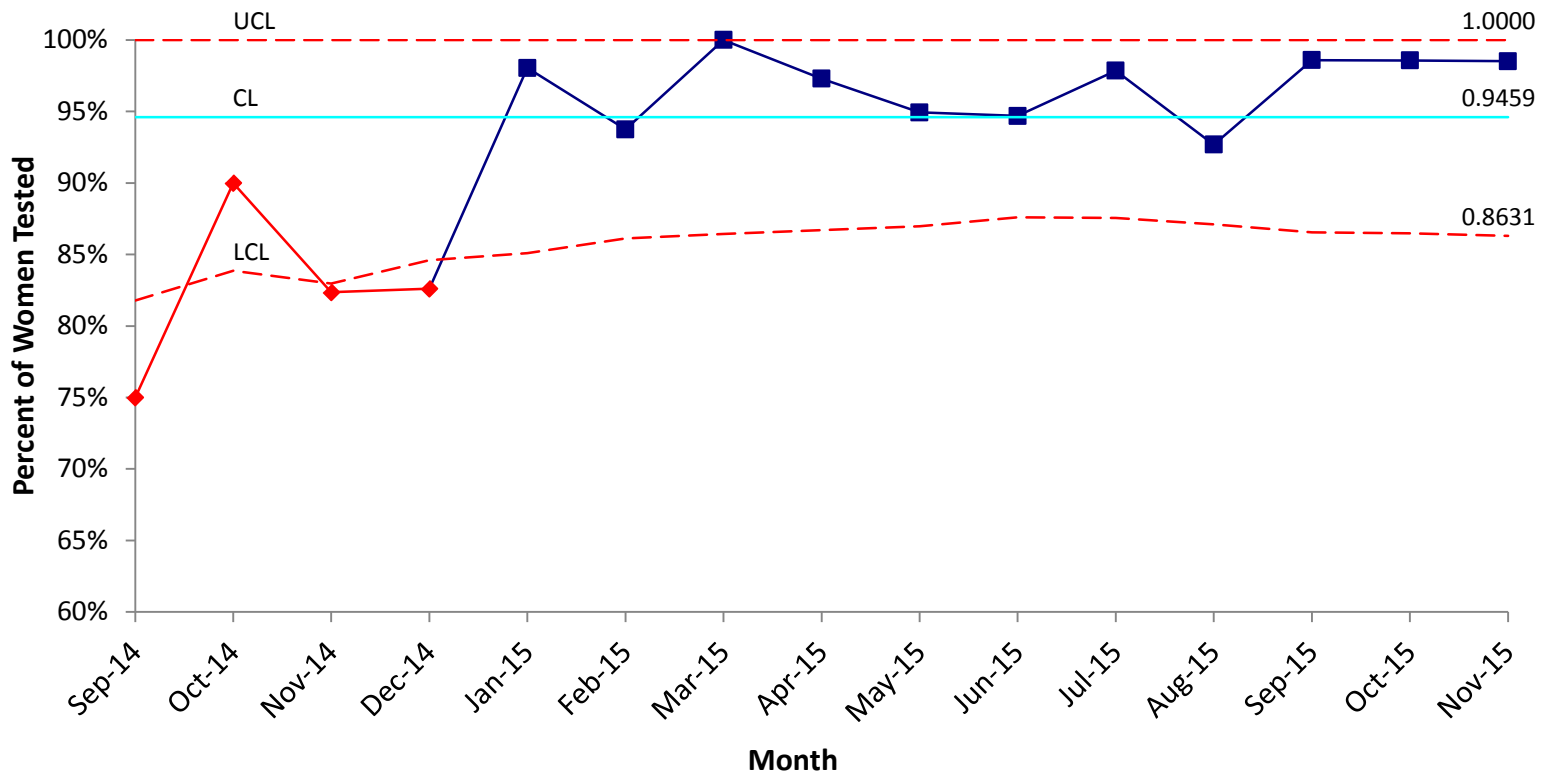
Under the leadership of the Office of Health Transformation (OHT), the Ohio Department of Mental Health and Addiction Services (OhioMHAS), and the Ohio Department of Medicaid (ODM), the Maternal Opiate Medical Supports (MOMS) is a two-year quality improvement initiative that seeks to improve fetal outcomes, improve family stability and reduce costs of Neonatal Abstinence Syndrome (NAS) to Ohio's Medicaid program by providing treatment to pregnant women who are dependent or addicted to opioids during and after pregnancy. This initiative employs the Maternal Care Home (MCH) model which is a team based healthcare delivery model that emphasizes care coordination and wrap-around services; specifically, the engagement of expecting mothers in a combination of counseling, Medication-Assisted Treatment (MAT), and case management. In addition to clinical services, some funds will support non-clinical services such as housing, transportation, and childcare. These services have been found to greatly assist in recovery.

Please contact [Robert Klein](#) with any questions about the website.

# Monthly Learning Sessions and Coaching

## Test for Adherence to Medication Assisted Treatment for Opiate Dependence

p-chart





# Academic Leaders & Subject Matter Experts

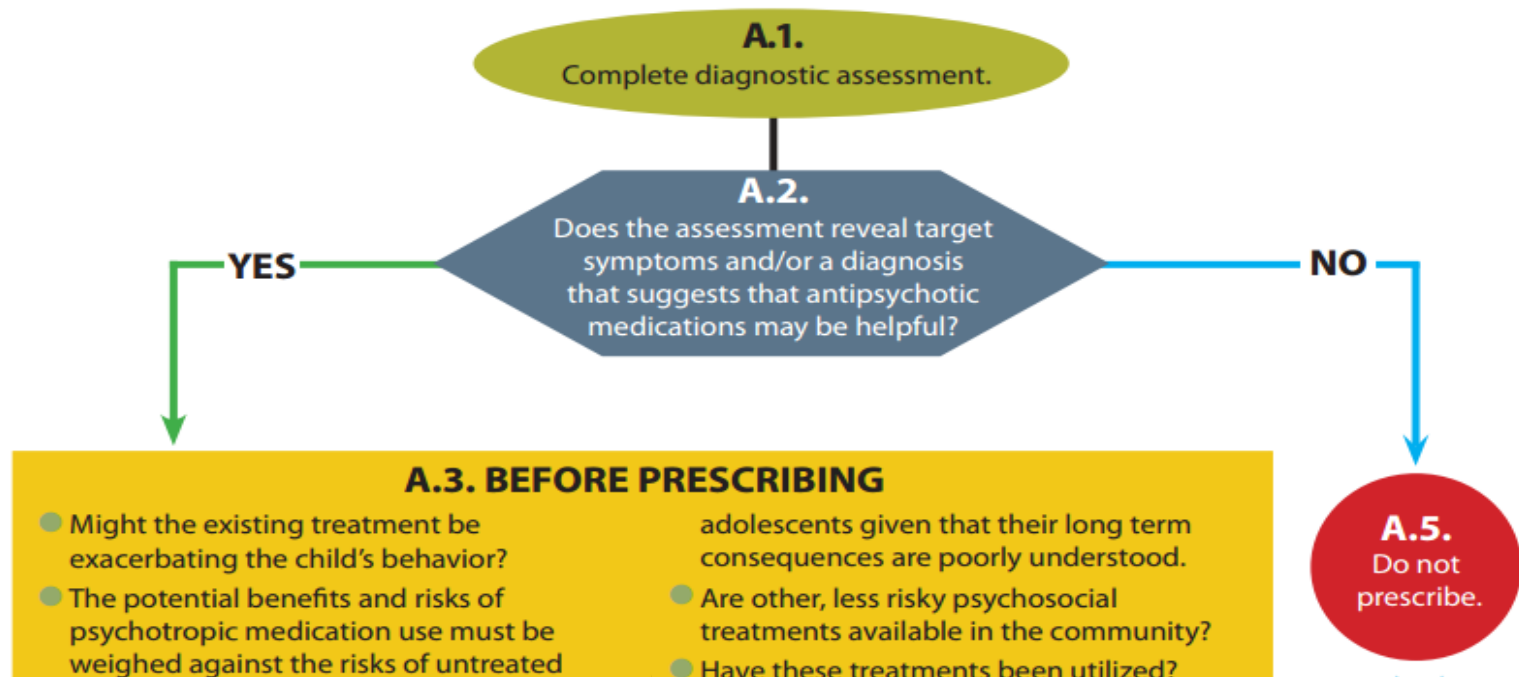
- Conduct research
- Identify key leverage points
- Lead improvement efforts
- Evaluate impact
- Serve as opinion leaders to engage provider community
- Integrate learning into academic training and practice

# Clinical Decision Support Resources



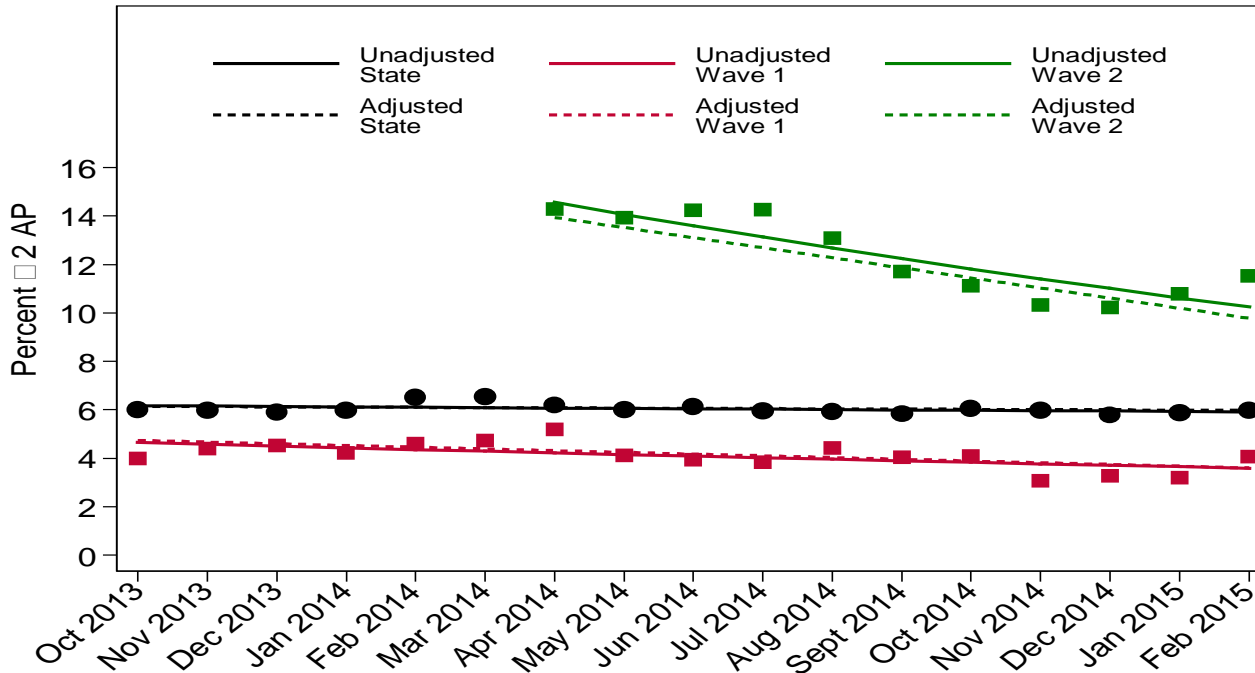
## Algorithm A

### Antipsychotic Medication Management in Children Under 6 Years of Age



# Results: Improve Psychotropic Prescribing

**Goal: Reduce prevalence of  $\geq 2$  AAPs by 25%**



**Result:** Pilot sites reduced use of  $\geq 2$  AAPs by about 25%

Length of exposure **6 months less** among children with  $\geq 2$  AAPs seen by Wave 1 providers

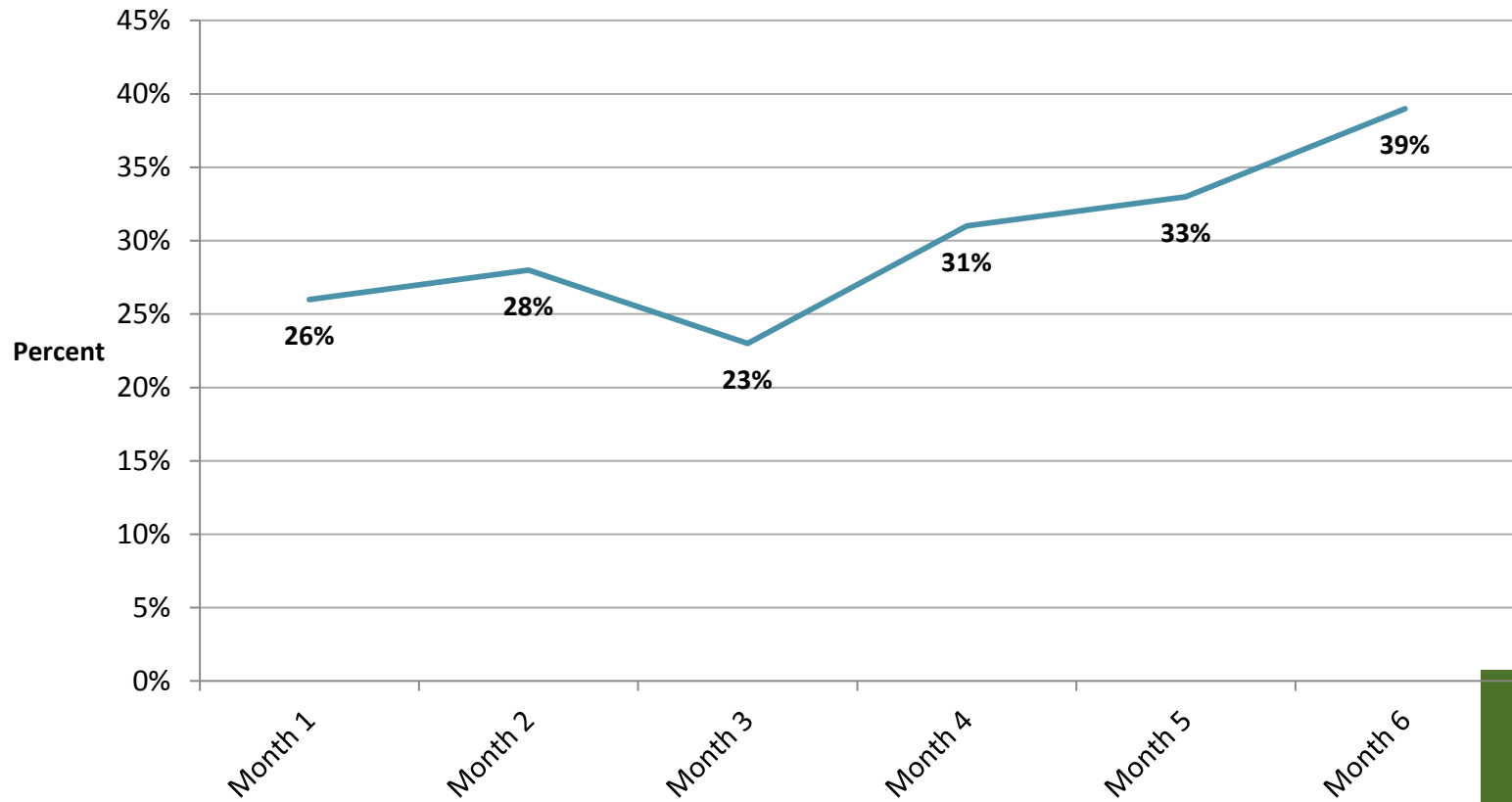
Change over time (adjusted):

- Wave 1 (n=2,130) 23.8% reduction, p<.05
- Wave 2 (n=1,170) 29.8% reduction, p<.05
- State (n=27,521) 2.6% reduction, not significant

# Results:

## Increase Post Partum Screening for Diabetes

### Post-Partum Oral Glucose Tolerance Test



The logo consists of a stylized graphic of three vertical bars of increasing height, with small squares at the top of each bar, in shades of blue and green.

# PUBLIC UNIVERSITY MEDICAID PARTNERSHIPS

LEVERAGING RESOURCES TO TRANSFORM HEALTHCARE PROGRAMS

## Beyond Research: What Services Can Universities Provide to State Agencies?

*Workforce Healthcare Access Initiative*

**Heather Reed, MA**

**Healthcare Access Program Director**

Ohio Colleges of Medicine Government Resource Center



**THE OHIO STATE UNIVERSITY**  
COLLEGE OF MEDICINE

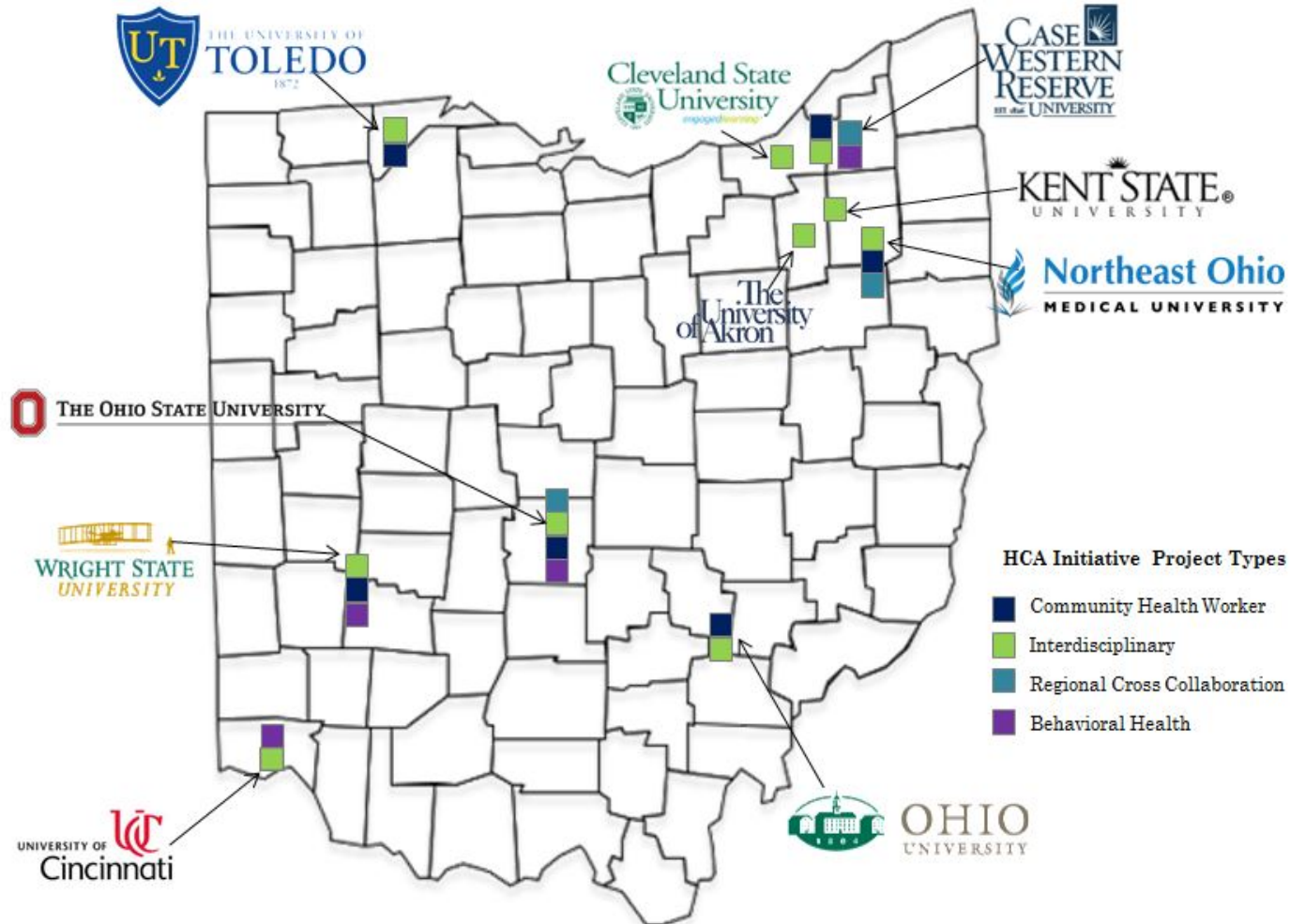
# MEDTAPP Healthcare Access (HCA) Initiative

- Fosters innovative partnerships between academic medical centers and health professions training programs
- Recognizes the growing need for creating a diverse workforce and enhancing interprofessional education
- Prepares current and future health care professionals to work in underserved communities
- Expands the state's capacity to recruit, train, and retain an enhanced workforce fully skilled to serve the Medicaid population

# MEDTAPP HCA Partnerships

- Academic Medical Centers
- Health Professions Training Programs
- Ohio Department of Health
- Ohio Department of Higher Education
- Ohio Department of Medicaid
- Ohio Department of Mental Health and Addiction Services

# MEDTAPP HCA Projects



Note: Examples of healthcare professionals engaged in interprofessional training include nursing, medicine, pharmacy, behavioral health, dentistry and rehabilitation sciences.



# Healthcare Access Initiative (HCA)

- Project Key Areas of Focus
  - Behavioral Health
  - Community Health Workers
  - Interprofessional Education
  - Community-Based Experiences

Increase Access to Care for Medicaid and  
Underserved Populations

# Behavioral Health

- Kent State Psychiatric Mental Health Advanced Practice Nursing curriculum and post-graduate certificate
  - Focus on early diagnoses in children and care for patients across the lifespan
  - Emphasizes non-traditional experiences
    - FQHCs, Mental health centers, prisons, schools, extended care facilities

# Community Health Workers

- **Wright State**

- Recruiting potential CHWs from current student population
- Working with community colleges statewide to develop certificate programs
- Offers Diabetes Management Specialization Course for existing and potential CHWs
- CHW Job placement assistance
  - Monitor the number of their students who enroll in and complete CHW certificate programs
  - Tracking the number of FQHCs which serve as field sites for CHW certificate programs

# Interprofessional Education

- Cleveland State University “MEDTAPP Mentor”
  - Interprofessional and mentor-mentee relationships
  - Monthly meetings and group project
  - Nursing, social work, physical and occupational therapy students
  - Monthly sessions incentivized with stipends
  - Online discussion community

# Community-Based Experiences

- University of Toledo
  - Rocket Pediatrics
    - School-based clinic where HCA students spend clinical hours
  - Metabolic Health Initiative
    - Health risk assessment program at the Metabolic Clinic
  - HealthGrows
    - Health promotion program addressing social determinants of health

# MEDTAPP HCA Evaluation

- To comprehensively assess the MEDTAPP HCA Initiative
- Develop an evaluation framework to guide sites with future data collection
- Characterize best practices across Ohio and nationally

# Three-Phase Study

## 1. Preliminary Activity Assessment

- Document review of MEDTAPP applications, participation reports, supplemental documents
- Structured phone interviews
- Identify peer programs in other states

## 2. Tailored Evaluation

- Site visits to each academic program site, selected placement sites
- Key informant interviews, group interviews, tours
- Focus groups with Medicaid enrollees, where appropriate

## 3. Cross-Site Analyses and Synthesis of Findings

# Preliminary Results Summary

- Considerable variation and innovation in HCA strategies – no “one size fits all”
- HCA strategies build on existing and create new relationships with local communities
- Developing placement sites for learners
- CHWs having impacts in their communities
- Impact of HCA initiative extends beyond numbers
- Learners train others
- Spillover effects into communities, schools, etc.



# Future Opportunities

- Establish collaborative learning environment to allow sites to share their successes
- Examine impact of interdisciplinary training in the context of Patient-Centered Medical Homes
- Share best practices, training models, and curriculum

# Contact

**Dushka Crane**  
**Director of Healthcare**  
**Integration**

Ohio Colleges of Medicine  
Government Resource Center  
[Dushka.Crane@osumc.edu](mailto:Dushka.Crane@osumc.edu)

**Heather Reed**  
**Healthcare Access Program**  
**Director**

Ohio Colleges of Medicine  
Government Resource Center  
[Heather.Reed@osumc.edu](mailto:Heather.Reed@osumc.edu)

# Questions